

INDEX

1. THE COMPANY
 - 1.1 MATERIALS
 - 1.2 CERTIFICATES
 - 1.3 WHERE WE ARE
 - 1.4 PRODUCT RANGE AND TURNKEY SOLUTIONS
 - 1.5 OUR WORKS
2. CABINETS FOR STERILIZATION WARD
 - 2.1 CABINETS IN PAINTED STEEL
3. WORK BENCHES
4. WALL UNITS
5. WORK TABLES
6. PASS THROUGH-WINDOWS
7. PASS BOX
8. SURGICAL SCRUB SINKS
 - WITH PHOTOCELL CONTROL
 - WITH LEVER CONTROL
 - WITH FOOT CONTROL
 - SINK BENCHES
9. ACCESSORIES FOR SCRUB SINK
10. MULTIPURPOSE TROLLEYS
11. MAYO TABLES
12. STEPS
13. SHELVES

1. THE COMPANY

Bawer S.p.A. is an high technological Italian company, specialized in design and production of innovative steel products.

By keeping up continuously with the market changes, the company project and produce with exclusive originality.

The ten-year experience leads the company every day to join innovation, professionalism and ability.

The punctuality in the service offered, the constant training of the high qualified staff and the well-structured commercial net give to the company BAWER the necessary consolidation to grow throughout time.



1.1 MATERIALS

The production BAWER bases essentially on the steel, its several finishing and typologies, each of them complying with the specific use required by the different market areas.

The choice of the raw material is careful and rigorous and fully satisfies the sanitary requirements.

The constant control tests of each component in all the phases of the production cycle are meticulous until the delivery of the end product, in order to grant the absolute perfection and compliance with the different customer's requirements.



1.2 CERTIFICATES

Quality is our business card used to present BAWER to the international markets. The certificates of BAWER's quality are various: **UNI EN ISO 9001, ISO/TS 16949, UNI EN ISO 14001, SA 8000 (Bilancio Sociale 2011), BS-OHSAS 18001, UNI EN ISO 13485, Best 4** (Business excellence sustainable task). The last one is a pattern that allows to certificate the Quality, Environment, Security and Social Responsibility integrated management systems.



1.3 WHERE WE ARE



BAWER S.p.A.

via Appia Antica km. 13,100
Zona Industriale Jesce
75100 Matera - Italy
Tel: +39 0835 245911
Fax: +39 0835 245935
info@bawer.it - www.bawer.it

1.4 PRODUCT RANGE AND TURNKEY SOLUTIONS

By choosing **BAWER MEDICAL** products, you can always rely on a direct relationship with our technical and sales staff, who is highly specialized and in constant training.

BAWER MEDICAL products are designed in order to guarantee the greatest versatility of use. They have the chance to be completely personalized both in shape and dimensions. BAWER's technical staff consists of high-specialized designers who are able to create products according to customer's drawing, in order to satisfy any requirement of use.

The production techniques consist of laser cuttings, folding, welding, as guarantee of high-quality product.

BAWER MEDICAL products are realized with stainless steel of high quality with thickness from 0,8 to 3,00 mm with satin, mat or polished standard finishing.



1.5 OUR WORKS



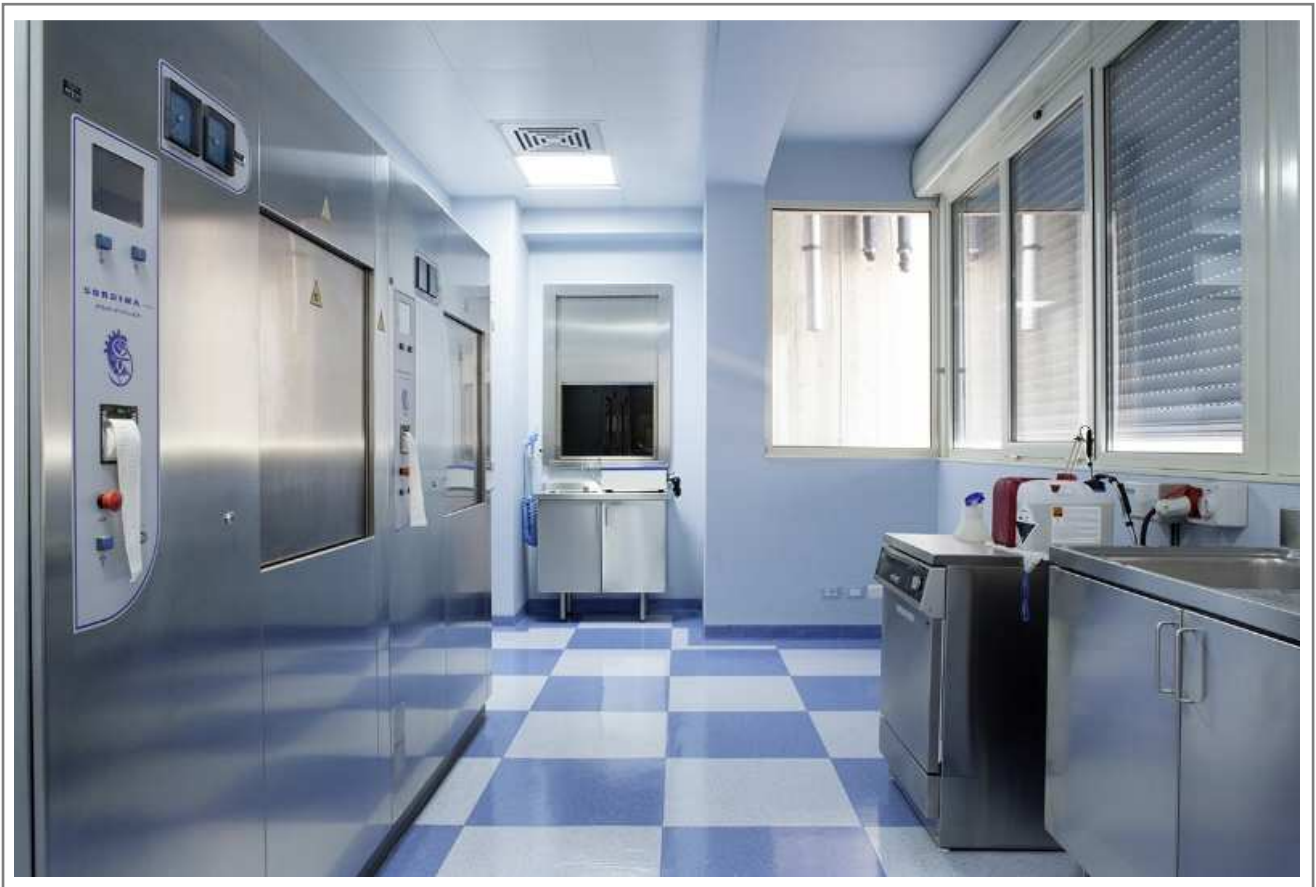
BAWER s.p.A. - Zona Industriale Jesce - 75100 Matera - Italy - Tel. +39 0835 24 59 11 - Fax +39 0835 24 59 35 - info@bawer.it - www.bawer.it
P.IVA /Cod. Fisc.: IT05593210726

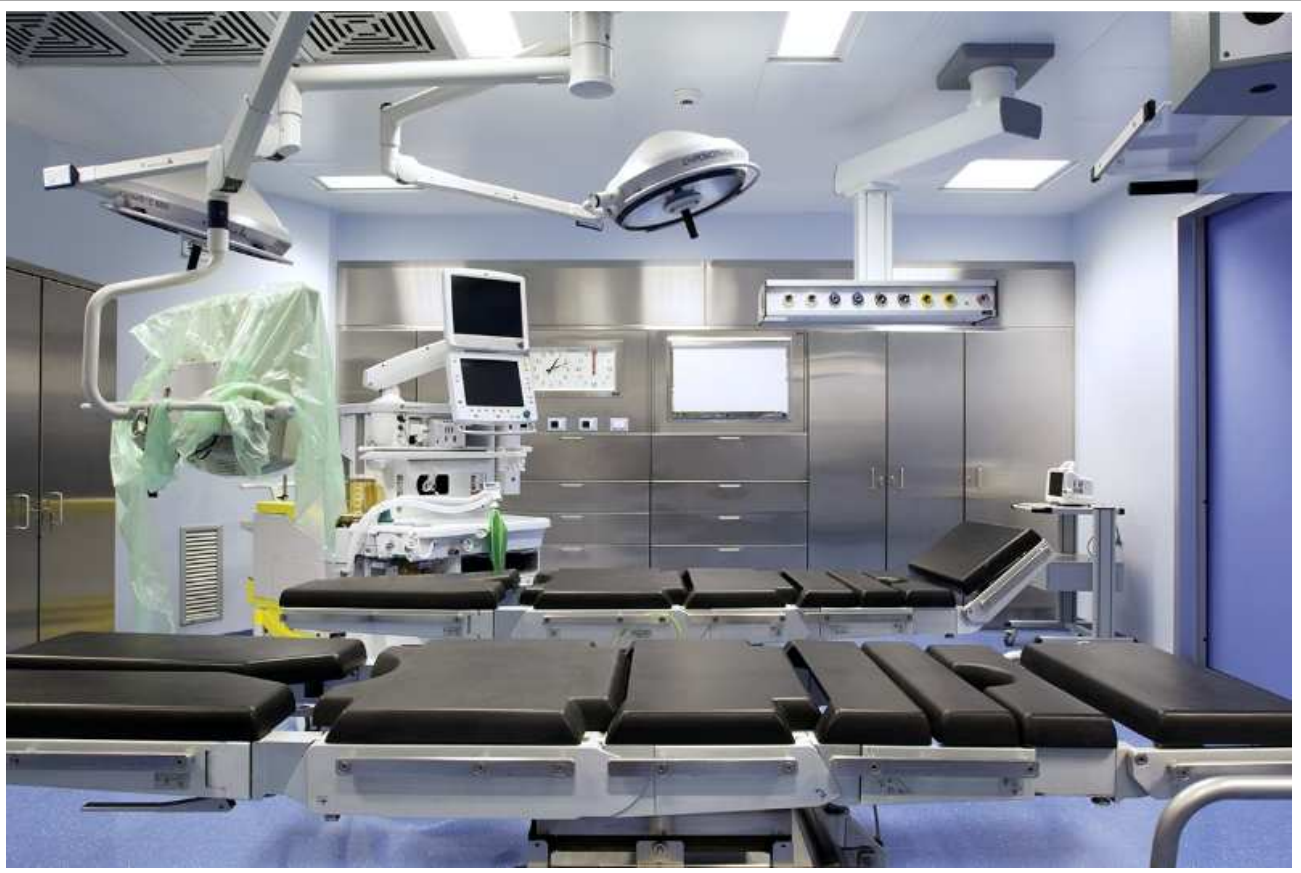
- INTRODUCTION: OUR WORKS -

Supplied by Merlin Industrial Products Ltd - 0845 124 9955 - sales@merlin-industrial.co.uk

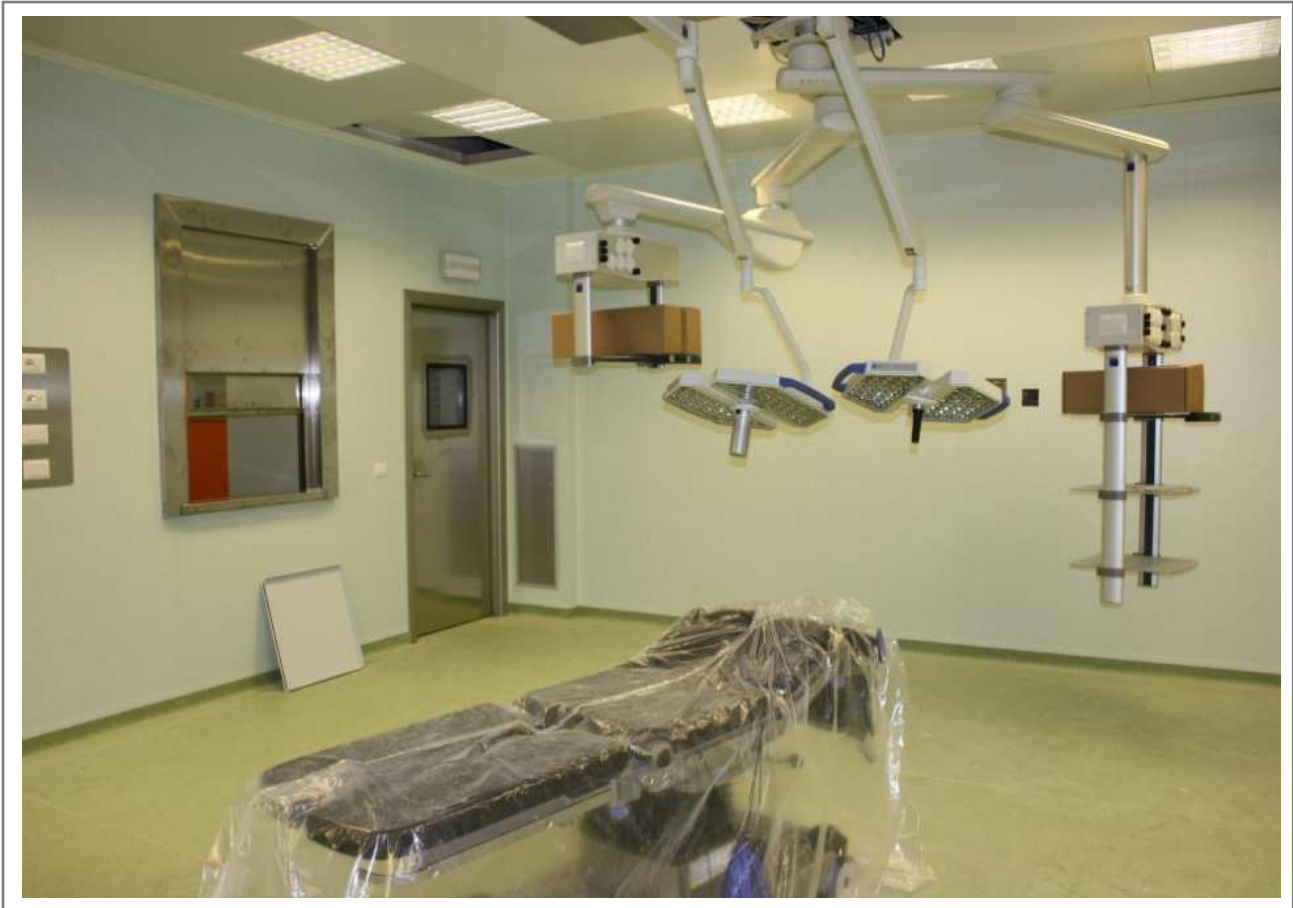












2. CABINETS FOR STERILIZATION WARD

BAWER MEDICAL stainless steel cabinets are designed for sterilization ward and can be personalized with several options. The cabinets can be endowed with electronic lock system, additional shelves, middle dividing wall and lower support. Also finishing and dimensions can be fully personalized.

The cabinets are modular in order to meet every requirements.



CABINET WITH X-RAY FILMS AND TRANSPARENT DRAWERS



Built-in cabinet for operating room, realized in stainless steel **AISI 304 EN 10088 1.4307**.

The standard version is equipped with:

- a modular dresser endowed with 4 pull-out drawers and seal for dust resistance.
- A module of standard dimensions HxD: 300x500/600 mm closed by a door which opened serves as writing desk. This module is made up of 12 transparent drawers for LIFO storing. The door is equipped with seal for dust resistance.
- A module of standard dimensions HxD: 700x500/600 mm negatoscope of dimensions 700x400 mm. It is made up of 2 lamps and double switching on. The control board is placed on the front panel of the module. The negatoscope can be fitted with LCD 32", which is endowed with USB and HDMI sockets.

The feet in stainless steel AISI 304 are adjustable. The module is equipped with a fixed stainless steel baseboard and seal for dust resistance.

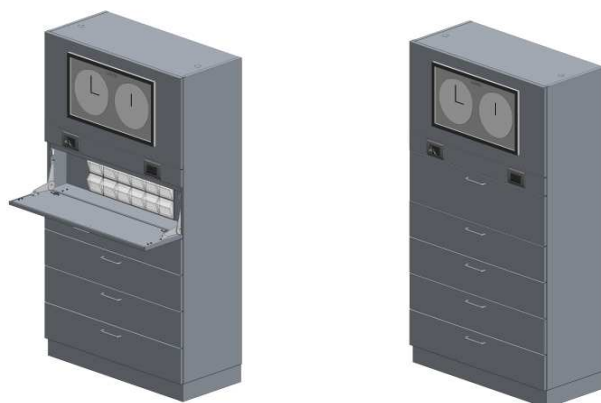
CODE	L	H	D
82040012	800	2000	500
82040013	1000	2000	500
82040014	1200	2000	500
82040015	800	2000	600
82040016	1000	2000	600
82040017	1200	2000	600

Components:

- SIDE PANELS

CODE	H	D	SIDE PANELS
82090000	2000	500	DX
82090001	2000	500	SX
82090002	2000	600	DX
82090003	2000	600	SX

CABINET WITH CLOCK AND TRANSPARENT DRAWERS



Built-in cabinet for operating room, realized in stainless steel **AISI 304 EN 10088 1.4307**.
The standard version is equipped with:

- a modular dresser endowed with 4 pull-out drawers and seal for dust resistance.
- A module of standard dimensions HxD: 300x500 mm closed by a door which opened serves as writing desk. This module is made up of 12 transparent drawers for LIFO storing. The door is equipped with seal for dust resistance.
- A modular stopwatch clock of standard dimensions HxD: 700x500; it is made up of 2 dials, one indicating the hour and the other recording the seconds. Clock dimensions LxH 600x360 mm.

The feet in stainless steel AISI 304 are adjustable. The module is equipped with a fixed stainless steel baseboard and seal for dust resistance.

CODE	L	H	D
82040018	800	2000	500
82040019	1000	2000	500
82040020	1200	2000	500
82040021	800	2000	600
82040022	1000	2000	600
82040023	1200	2000	600

Components:

- SIDE PANELS

CODE	H	D	SIDE PANELS
82090000	2000	500	DX
82090001	2000	500	SX
82090002	2000	600	DX
82090003	2000	600	SX

CABINET WITH 1 LEAF BLIND DOOR



Cabinet in stainless steel **AISI 304 EN 10088 1.4307**.

The standard version is made up of 1 leaf blind door and 4 adjustable shelves.

The door is equipped with lock system and shock-proof handle in stainless steel.

The feet in stainless steel AISI 304 are adjustable. The module is equipped with a fixed stainless steel baseboard and seal for dust resistance.

CODE	L	H	D
82040030	400	2000	500
82040031	500	2000	500
82040032	600	2000	500
82040033	400	2000	600
82040034	500	2000	600
82040035	600	2000	600

Components:

- SIDE PANELS

CODE	H	D	SIDE PANELS
82090000	2000	500	DX
82090001	2000	500	SX
82090002	2000	600	DX
82090003	2000	600	SX

CABINET WITH 1 LEAF BLIND DOOR AND 4 DRAWERS



Cabinet in stainless steel **AISI 304 EN 10088 1.4307**.

The standard version is made up of 1 leaf blind door on the upper part and n. 4 pull-out drawers on the lower part. On the upper compartment there are 2 adjustable shelves.

The door is equipped with lock system and shock-proof handle in stainless steel.

The feet in stainless steel AISI 304 are adjustable. The module is equipped with a fixed stainless steel baseboard and seal for dust resistance.

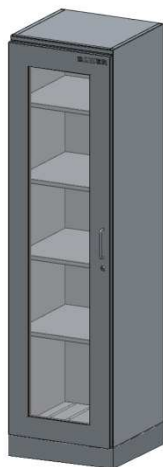
CODE	L	H	D
82040036	400	2000	500
82040037	500	2000	500
82040038	600	2000	500
82040039	400	2000	600
82040040	500	2000	600
82040041	600	2000	600

Components:

- SIDE PANELS

CODE	H	D	SIDE PANELS
82090000	2000	500	DX
82090001	2000	500	SX
82090002	2000	600	DX
82090003	2000	600	SX

■ CABINET WITH 1 LEAF GLASS DOOR



Cabinet in stainless steel **AISI 304 EN 10088 1.4307**.

The standard version is made up of 1 stratified Visarm glass, leaf door and 4 adjustable shelves.

The door is equipped with lock system and shock-proof handle in stainless steel.

The feet in stainless steel AISI 304 are adjustable. The module is equipped with a fixed stainless steel baseboard and seal for dust resistance.

CODE	L	H	D
82040042	400	2000	500
82040043	500	2000	500
82040044	600	2000	500
82040045	400	2000	600
82040046	500	2000	600
82040047	600	2000	600

Components:

- SIDE PANELS

CODE	H	D	SIDE PANELS
82090000	2000	500	DX
82090001	2000	500	SX
82090002	2000	600	DX
82090003	2000	600	SX

CABINET WITH 1 LEAF GLASS DOOR AND 1 LEAF BLIND DOOR



Cabinet in stainless steel **AISI 304 EN 10088 1.4307**.

The standard version is made up of 1 stratified Visarm, leaf glass door on the upper part and 1 leaf blind door on the lower part. On each compartment there are 2 adjustable shelves.

The doors are equipped with lock system and shock-proof handle in stainless steel.

The feet in stainless steel AISI 304 are adjustable. The module is equipped with a fixed stainless steel baseboard and seal for dust resistance.

CODE	L	H	D
82040048	400	2000	500
82040049	500	2000	500
82040050	600	2000	500
82040051	400	2000	600
82040052	500	2000	600
82040053	600	2000	600

Components:

- SIDE PANELS

CODE	H	D	SIDE PANELS
82090000	2000	500	DX
82090001	2000	500	SX
82090002	2000	600	DX
82090003	2000	600	SX

CABINETS WITH 1 LEAF GLASS DOOR AND 4 DRAWERS



Cabinet in stainless steel **AISI 304 EN 10088 1.4307**.

The standard version is made up of 1 stratified Visarm glass, leaf door on the upper part and 4 pull-out drawers on the lower part. On the upper compartment there are 2 adjustable shelves.

The door is equipped with lock system and shock-proof handle in stainless steel.

The feet in stainless steel AISI 304 are adjustable. The module is equipped with a fixed stainless steel baseboard and seal for dust resistance.

CODE	L	H	D
82040054	400	2000	500
82040055	500	2000	500
82040056	600	2000	500
82040057	400	2000	600
82040058	500	2000	600
82040059	600	2000	600

Components:

- SIDE PANELS

CODE	H	D	SIDE PANELS
82090000	2000	500	DX
82090001	2000	500	SX
82090002	2000	600	DX
82090003	2000	600	SX

CABINET WITH 2 LEAF BLIND DOORS



Cabinet in stainless steel **AISI 304 EN 10088 1.4307**.

The standard version is made up of 2 leaf blind doors, 4 adjustable shelves.

The doors are equipped with shock-proof handle in stainless steel.

The feet in stainless steel AISI 304 are adjustable. The module is equipped with a fixed stainless steel baseboard and seal for dust resistance.

CODE	L	H	D
82040000	800	2000	500
82040001	1000	2000	500
82040002	1200	2000	500
82040003	800	2000	600
82040004	1000	2000	600
82040005	1200	2000	600

Components:

- SIDE PANELS

CODE	H	D	SIDE PANELS
82090000	2000	500	DX
82090001	2000	500	SX
82090002	2000	600	DX
82090003	2000	600	SX

■ CABINET WITH 4 LEAF BLIND DOORS



Cabinet in stainless steel **AISI 304 EN 10088 1.4307**.

The standard version is made up of 4 leaf blind doors. On each compartment there are 2 adjustable shelves.

The doors are equipped with shock-proof handle in stainless steel.

The feet in stainless steel AISI 304 are adjustable. The module is equipped with a fixed stainless steel baseboard and seal for dust resistance.

CODE	L	H	D
82040114	800	2000	500
82040115	1000	2000	500
82040116	1200	2000	500
82040117	800	2000	600
82040118	1000	2000	600
82040119	1200	2000	600

Components:

- SIDE PANELS

CODE	H	D	SIDE PANELS
82090000	2000	500	DX
82090001	2000	500	SX
82090002	2000	600	DX
82090003	2000	600	SX

CABINET WITH 2 LEAF BLIND DOORS AND 4 DRAWERS



Cabinet in stainless steel **AISI 304 EN 10088 1.4307**.

The standard version is made up of 2 leaf blind doors on the upper part and 4 pull-out drawers on the lower part. On the upper compartment there are 2 adjustable shelves.

The doors are equipped with shock-proof handle in stainless steel.

The feet in stainless steel AISI 304 are adjustable. The module is equipped with a fixed stainless steel baseboard and seal for dust resistance.

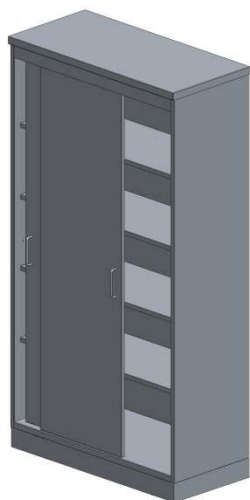
CODE	L	H	D
82040066	800	2000	500
82040067	1000	2000	500
82040068	1200	2000	500
82040069	800	2000	600
82040070	1000	2000	600
82040071	1200	2000	600

Components:

- SIDE PANELS

CODE	H	D	SIDE PANELS
82090000	2000	500	DX
82090001	2000	500	SX
82090002	2000	600	DX
82090003	2000	600	SX

CABINET WITH 2 BLIND SLIDING DOORS



Cabinet in stainless steel **AISI 304 EN 10088 1.4307**.

The standard version is made up of 2 blind sliding doors and 4 adjustable shelves. .

The doors are equipped with shock-proof handle in stainless steel.

The feet in stainless steel AISI 304 are adjustable. The module is equipped with a fixed stainless steel baseboard and seal for dust resistance.

CODE	L	H	D
82040072	800	2000	500
82040073	1000	2000	500
82040074	1200	2000	500
82040075	800	2000	600
82040076	1000	2000	600
82040077	1200	2000	600

Components:

- SIDE PANELS

CODE	H	D	SIDE PANELS
82090000	2000	500	DX
82090001	2000	500	SX
82090002	2000	600	DX
82090003	2000	600	SX

■ CABINET WITH 4 BLIND SLIDING DOORS



Cabinet in stainless steel **AISI 304 EN 10088 1.4307**.

The standard version is made up of 4 blind sliding doors. On each compartment there are 2 adjustable shelves.

The doors are equipped with shock-proof handle in stainless steel.

The feet in stainless steel AISI 304 are adjustable. The module is equipped with a fixed stainless steel baseboard and seal for dust resistance.

CODE	L	H	D
82040078	800	2000	500
82040079	1000	2000	500
82040080	1200	2000	500
82040081	800	2000	600
82040082	1000	2000	600
82040083	1200	2000	600

Components:

- SIDE PANELS

CODE	H	D	SIDE PANELS
82090000	2000	500	DX
82090001	2000	500	SX
82090002	2000	600	DX
82090003	2000	600	SX

CABINET WITH 2 LEAF GLASS DOORS



Cabinet in stainless steel **AISI 304 EN 10088 1.4307**.

The standard version is made up of 2 stratified Visarm glass, leaf doors, 4 adjustable shelves.

The doors are equipped with shock-proof handle in stainless steel.

The feet in stainless steel AISI 304 are adjustable. The module is equipped with a fixed stainless steel baseboard and seal for dust resistance.

CODE	L	H	D
82040006	800	2000	500
82040007	1000	2000	500
82040008	1200	2000	500
82040009	800	2000	600
82040010	1000	2000	600
82040011	1200	2000	600

Components:

- SIDE PANELS

CODE	H	D	SIDE PANELS
82090000	2000	500	DX
82090001	2000	500	SX
82090002	2000	600	DX
82090003	2000	600	SX

CABINET WITH 2 LEAF GLASS DOORS AND 4 DRAWERS



Cabinet in stainless steel **AISI 304 EN 10088 1.4307**.

The standard version is made up of 2 stratified glass, leaf doors in the upper part and 4 pull-out drawers in the lower part. On the upper compartment there are 2 adjustable shelves.

The doors are equipped with shock-proof handle in stainless steel.

The feet in stainless steel AISI 304 are adjustable. The module is equipped with a fixed stainless steel baseboard and seal for dust resistance.

CODE	L	H	D
82040090	800	2000	500
82040091	1000	2000	500
82040092	1200	2000	500
82040093	800	2000	600
82040094	1000	2000	600
82040095	1200	2000	600

Components:

- SIDE PANELS

CODE	H	D	SIDE PANELS
82090000	2000	500	DX
82090001	2000	500	SX
82090002	2000	600	DX
82090003	2000	600	SX

CABINET WITH 2 LEAF GLASS DOORS AND 2 LEAF BLIND DOORS



Cabinet in stainless steel **AISI 304 EN 10088 1.4307**.

The standard version is made up of 2 stratified Visarm glass, leaf doors on the upper part and 2 leaf blind doors on the lower part. On each compartment there are 2 adjustable shelves.

The doors are equipped with shock-proof handle in stainless steel.

The feet in stainless steel AISI 304 are adjustable. The module is equipped with a fixed stainless steel baseboard and seal for dust resistance.

CODE	L	H	D
82040096	800	2000	500
82040097	1000	2000	500
82040098	1200	2000	500
82040099	800	2000	600
82040100	1000	2000	600
82040101	1200	2000	600

Components:

- SIDE PANELS

CODE	H	D	SIDE PANELS
82090000	2000	500	DX
82090001	2000	500	SX
82090002	2000	600	DX
82090003	2000	600	SX

CABINET WITH 2 GLASS SLIDING DOORS



Cabinet in stainless steel **AISI 304 EN 10088 1.4307**.

The standard version is made up of 2 stratified Visarm glass, sliding doors and 4 adjustable shelves.

The doors are equipped with shock-proof handle in stainless steel.

The feet in stainless steel AISI 304 are adjustable. The module is equipped with a fixed stainless steel baseboard and seal for dust resistance.

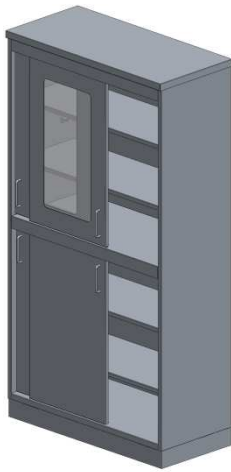
CODE	L	H	D
82040102	800	2000	500
82040103	1000	2000	500
82040104	1200	2000	500
82040105	800	2000	600
82040106	1000	2000	600
82040107	1200	2000	600

Components:

- SIDE PANELS

CODE	H	D	SIDE PANELS
82090000	2000	500	DX
82090001	2000	500	SX
82090002	2000	600	DX
82090003	2000	600	SX

■ CABINET WITH 2 GLASS SLIDING DOORS AND 2 BLIND SLIDING DOORS



Cabinet in stainless steel **AISI 304 EN 10088 1.4307**.

The standard version is made up of 2 stratified Visarm glass, sliding doors in the upper part and 2 blind sliding doors in the lower part. On each compartment there are 2 adjustable shelves.

The doors are equipped with shock-proof handle in stainless steel.

The feet in stainless steel AISI 304 are adjustable. The module is equipped with a fixed stainless steel baseboard and seal for dust resistance.

CODE	L	H	D
82040108	800	2000	500
82040109	1000	2000	500
82040110	1200	2000	500
82040111	800	2000	600
82040112	1000	2000	600
82040113	1200	2000	600

Components:

- SIDE PANELS

CODE	H	D	SIDE PANELS
82090000	2000	500	DX
82090001	2000	500	SX
82090002	2000	600	DX
82090003	2000	600	SX

2.1 CABINETS IN PAINTED STEEL

BAWER MEDICAL cabinets are designed to keep clean linen, sterile kits, used surgical sheets, coats and uniforms and they are available in the painted and stainless steel versions. BAWER cabinets can be personalized with several options. It is possible to implement the cabinets with electronic lock systems, additional shelves and middle dividing walls, different colors, personalized finishing and dimensions.

BAWER MEDICAL cabinets are flexible and modular in order to meet every requirement.



■ **CABINET FOR STERILE SHEETS**

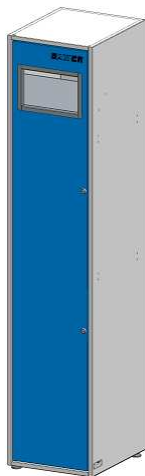


Cabinet in white/blue painted steel.

It is possible to open the big door of the cabinet for sterile sheets along the whole height or the doors can be opened individually with plastic dial lock.

CODE	L	H	D
81040000	380	1800	450

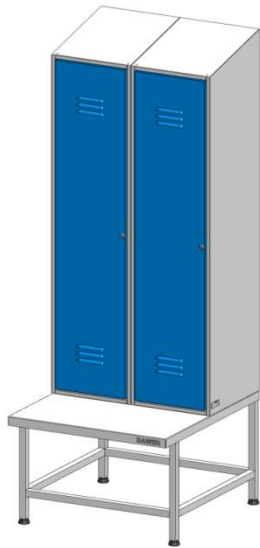
■ **CABINET FOR DIRTY SHEETS**



Cabinet in white/blue painted steel.

The door can be fully opened equipped with an inlet collection with intrusion protection. Endowed with hooks for hanging sacks.

CODE	L	H	D
81041000	380	1800	450

■ **WARDROBE CABINET**

Cabinet in white/blue painted steel.

The standard version is made up of sloping roof , 2 leaf doors with lock system. On the doors there are air vents. Each compartment is equipped with 1 adjustable shelf and 1 bar for hanging clothes. The structure is equipped also with a bench with antistatic feet.

CODE	L	H	P
81042000	760	2100	850

3. WORK BENCHES

BAWER MEDICAL work benches are synonym of high quality. They are produced in stainless steel and grant higher resistance to rust, corrosion and disinfectants commonly used in the healthcare field.

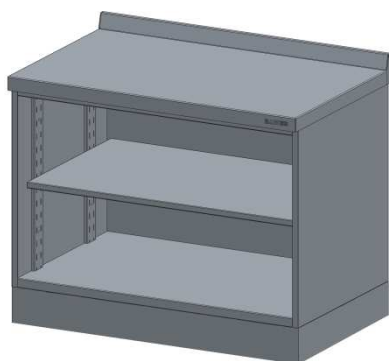
Care of details: seal for dust resistance, adjustable feet, rear lifting produced in a single element.

On demand, it is possible to provide them with sliding doors, additional shelves, lower support. Finishing and dimensions can be fully personalized.

The **BAWER MEDICAL** work benches can be combined with the wall units.



■ WORK BENCH WITH OPEN COMPARTMENT



Work bench in stainless steel **AISI 304 EN 10088 1.4307**.

The work top and the rear lifting H=40 mm are realized in a single element to facilitate the hygiene.

The standard version is equipped with 1 adjustable shelf.

The feet in stainless steel AISI 304 are adjustable. The work bench is equipped with a fixed stainless steel baseboard.

CODE	L	H	D
82035003	800	870	600
82035004	1000	870	600
82035005	1200	870	600

Components:

- SIDE PANELS

CODE	H	D	SIDE PANELS
82090004	870	600	DX
82090005	870	600	SX

■ WORK BENCH WITH 2 LEAF BLIND DOORS



Work bench in stainless steel **AISI 304 EN 10088 1.4307**.

The work top and the rear lifting H=40 mm are realized in a single element to facilitate the hygiene.

The standard version is equipped with 2 leaf blind doors with seal for dust resistance, shock-proof handles in stainless steel and 1 adjustable shelf.

The feet in stainless steel AISI 304 are adjustable. The work bench is equipped with a fixed stainless steel baseboard.

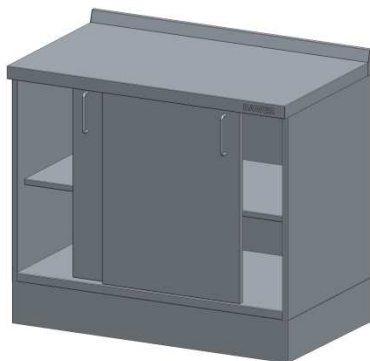
CODE	L	H	D
82035000	800	870	600
82035001	1000	870	600
82035002	1200	870	600

Components:

- SIDE PANELS

CODE	H	D	SIDE PANELS
82090004	870	600	DX
82090005	870	600	SX

■ WORK BENCHES WITH 2 BLIND SLIDING DOORS



Work bench in stainless steel **AISI 304 EN 10088 1.4307**.

The work top and the rear lifting H=40 mm are realized in a single element to facilitate the hygiene.

The standard version is equipped with 2 blind sliding doors, shock-proof handles in stainless steel and 1 adjustable shelf.

The feet in stainless steel AISI 304 are adjustable. The work bench is equipped with a fixed stainless steel baseboard; without seal for dust resistance.

CODE	L	H	D
82035009	800	870	600
82035010	1000	870	600
82035011	1200	870	600

Components:

- SIDE PANELS

CODE	H	D	SIDE PANELS
82090004	870	600	DX
82090005	870	600	SX

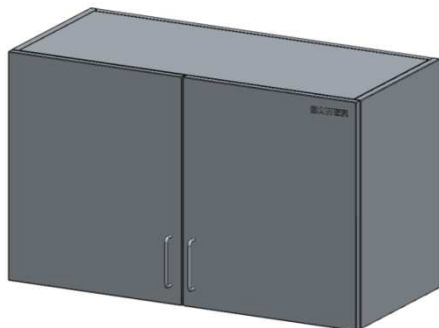
4. WALL UNITS

BAWER MEDICAL wall units are realized in stainless steel AISI 304; as the work benches, they grant higher resistance to rust, corrosion and disinfectants commonly used in the healthcare field.

They are available in different versions with blind or glass, leaf or sliding doors. Finishing and dimensions can be fully personalized.



■ WALL UNIT WITH 2 LEAF BLIND DOORS



Wall unit in stainless steel **AISI 304 EN 10088 1.4307**.

The standard version is equipped with 2 leaf blind doors with seal for dust resistance, 2 adjustable shelves, shock-proof handles in stainless steel and middle dividing wall. The wall unit is supplied with wall brackets to fix it. It is endowed with hooking system for the adjustment. It is also equipped with 135 degrees opening hinges.

CODE	L	H	D
82036000	800	600	350
82036001	1000	600	350
82036002	1200	600	350

Components:

- SIDE PANELS

CODE	H	D	SIDE PANELS
8209006	600	350	DX
8209007	600	350	SX

■ WALL UNIT WITH 2 BLIND SLIDING DOORS



Wall unit in stainless steel **AISI 304 EN 10088 1.4307**.

The standard version is equipped with 2 blind sliding doors, 1 adjustable shelf, shock-proof handles and middle dividing wall. The wall unit is supplied with wall brackets to fix it. It is endowed with hooking system for the adjustment. It is also equipped with 135 degrees opening hinges.

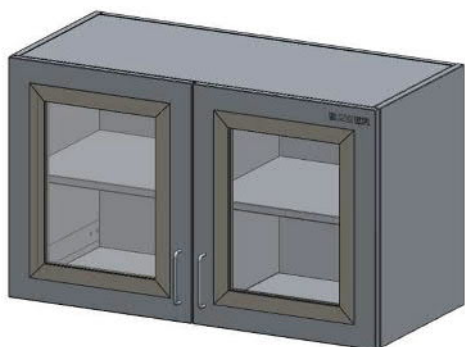
CODE	L	H	D
82036006	800	600	350
82036007	1000	600	350
82036008	1200	600	350

Components:

- SIDE PANELS

CODE	H	D	SIDE PANELS
8209006	600	350	DX
8209007	600	350	SX

■ WALL UNIT WITH 2 LEAF GLASS DOORS



Wall unit in stainless steel **AISI 304 EN 10088 1.4307**.

The standard version is equipped with 2 stratified Visarm glass, leaf doors with seal for dust resistance, 2 adjustable shelves, shock-proof handle and middle dividing wall. The wall unit is supplied with wall brackets to fix it. It is endowed with hooking system for the adjustment. It is also equipped with 135 degrees opening hinges.

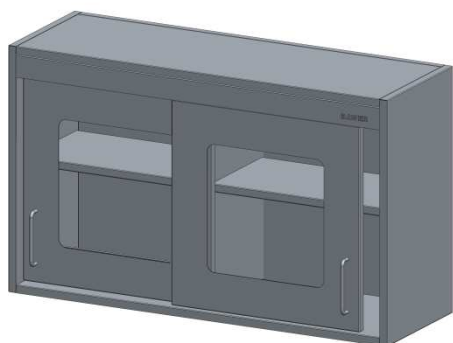
CODE	L	H	D
82036003	800	600	350
82036004	1000	600	350
82036005	1200	600	350

Components:

- SIDE PANELS

CODE	H	D	SIDE PANELS
8209006	600	350	DX
8209007	600	350	SX

WALL UNIT WITH 2 GLASS SLIDING DOORS



Wall unit in stainless steel **AISI 304 EN 10088 1.4307**.

The standard version is equipped with 2 stratified Visarm glass, sliding doors, 2 adjustable shelves, shock-proof handles and middle dividing wall. The wall unit is supplied with wall brackets to fix it. It is endowed with hooking system for the adjustment. It is also equipped with 135 degrees opening hinges.

CODE	L	H	D
82036009	800	600	350
82036010	1000	600	350
82036011	1200	600	350

Components:

- SIDE PANELS

CODE	H	D	SIDE PANELS
8209006	600	350	DX
8209007	600	350	SX

5. WORK TABLES

BAWER MEDICAL work tables in stainless steel are designed to have top solidity and functionality, they grant hygiene and safety. In the standard version, the work tables are endowed with adjustable feet. On customer's demand, they can be personalized with anti-static castors (2 of them with brakes), lower shelf, rear lifting and pull-out drawers.



■ **WORK TABLE**

Work table in stainless steel **AISI 304 EN 10088 1.4307**.

The structure of the work table is realized in tubular 40x40 mm, with adjustable feet.

The work top in stainless steel AISI 304 EN 10088 1.4307, has a thickness of 15/10 mm and it is equipped with a marine plywood support. With adjustable feet..

CODE	L	H	D
82030000	800	870	600
82030001	1000	870	600
82030002	1200	870	600
82030003	1400	870	600
82030004	1600	870	600

■ **WORK TABLE WITH LOWER SHELF**

Work table in stainless steel **AISI 304 EN 10088 1.4307**.

The structure of the work table is realized in tubular 40x40 mm, with 1 lower shelf and with adjustable feet.

The work top in stainless steel AISI 304 EN 10088 1.4307, has a thickness of 15/10 mm and it is equipped with a marine plywood support. With adjustable feet..

CODE	L	H	D
82030005	800	870	600
82030006	1000	870	600
82030007	1200	870	600
82030008	1400	870	600
82030009	1600	870	600

■ **WORK TABLE WITH LOWER SHELF AND REAR LIFTING**



Work table in stainless steel **AISI 304 EN 10088 1.4307**.

The structure of the work table is realized in tubular 40x40 mm. The work top in stainless steel AISI 304 EN 10088 1.4307, has a thickness of 15/10 mm and it is equipped with a marine plywood support.

The standard version is equipped with 1 lower shelf and outer rear lifting of 40 mm produced in a single element with the work top to guarantee hygiene; with adjustable feet.

CODE	L	H	D
82030010	800	870	600
82030011	1000	870	600
82030012	1200	870	600
82030013	1400	870	600
82030014	1600	870	600

6. PASS THROUGH WINDOWS

BAWER MEDICAL pass through windows are suitable for the passing of instruments and equipment between two environments with different degree of cleanliness. They are realized in stainless steel AISI 304 with the manufacturing system of Laser and/or TIG welding, synonymous of certified guarantee. On request the pass through windows can be supplied with anti x-ray protection.



PASS THROUGH WINDOW IN STAINLESS STEEL AND SECURITY GLASS



Pass through window in stainless steel **AISI 304 EN 10088 1.4307** and stratified security glass.

The standard version is equipped with a sliding, vertical door, stratified glass with or without ANTI X-RAY protection, seal for dust resistance, long steel handle, manual lifting and external frames on both side panels. The dimension of the wall hole must exceed of about 50 mm the dimension L and H.

STRATIFIED GLASS WITHOUT ANTI X-RAY PROTECTION

CODE	L	H	D
82037000	600	1200	215 ÷ 1000
82037001	700	1200	215 ÷ 1000
82037002	800	1200	215 ÷ 1000

STRATIFIED GLASS WITH ANTI X-RAY Pb2

CODE	L	H	D
82037003	600	1200	215 ÷ 1000
82037004	700	1200	215 ÷ 1000
82037005	800	1200	215 ÷ 1000

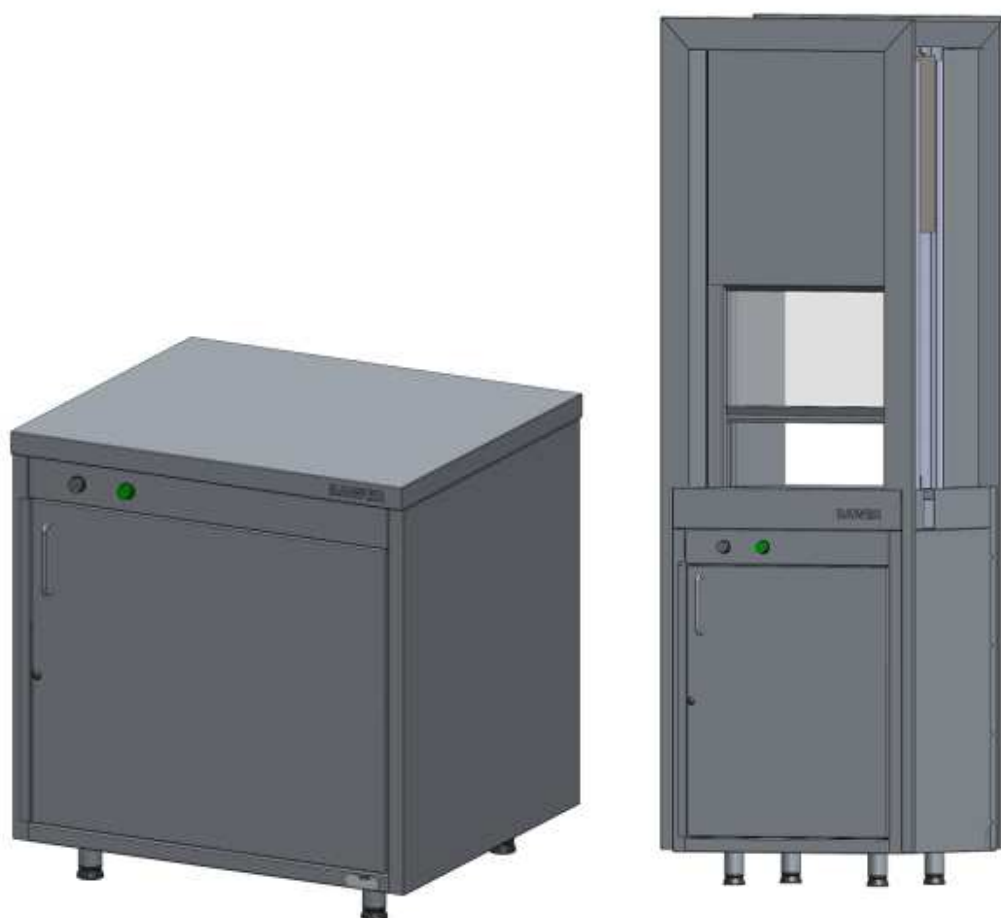
STRATIFIED GLASS WITH ANTI X-RAY Pb3

CODE	L	H	D
82037006	600	1200	215 ÷ 1000
82037007	700	1200	215 ÷ 1000
82037008	800	1200	215 ÷ 1000

7. PASS BOX

BAWER MEDICAL pass box is designed, realized and assigned to the passing of instruments and equipment between two environments with different degree of cleanliness. It is designed to minimize traffic and contamination entry into the clean room.

It is equipped with electric interlocking for the doors. On request the pass box can be supplied with anti x-ray protection.



■ **CLEAN PASS BOX**

Pass box realized in stainless steel **AISI 304 EN 10088 1.4307**.

The standard version is equipped with 1+1 leaf blind doors, with shock-proof handle, electric interlocking system with bottom panel, door open indicator, 135 degrees opening hinges.

The feet in stainless steel AISI 304 are adjustable.

CODE	L	H	D
82038000	600	800	600

PASS BOX WITH PASS THROUGH WINDOW



Pass box with pass through window in stainless steel **AISI 304 EN 10088 1.4307**.

The standard version is equipped on the upper part with a pass through window with a sliding, vertical door, stratified glass with or without ANTI X-RAY protection, seal for dust resistance, long steel handle, manual lifting and external frames on both side panels.

On the lower part it is equipped with a pass box with 1+1 leaf blind doors, with shock-proof handle, electric interlocking system with bottom panel, with door open indicator and with 135 degrees opening hinges.

STRATIFIED GLASS WITHOUT ANTI X-RAY PROTECTION

CODE	L	H	D
82038001	600	2000	600
82038002	700	2000	600
82038003	800	2000	600

STRATIFIED GLASS WITH ANTI X-RAY Pb2

CODE	L	H	D
82038004	600	2000	600
82038005	700	2000	600
82038006	800	2000	600

STRATIFIED GLASS WITH ANTI X-RAY Pb3

CODE	L	H	D
82038007	600	2000	600
82038008	700	2000	600
82038009	800	2000	600

8. SCRUB SINKS

BAWER MEDICAL scrub sinks in stainless steel include several technical details showing particular care and quality.

The high resistance to the medical devices commonly used in the healthcare field characterizes BAWER scrub sinks, granting an effective and deep cleaning.

The scrub sinks are available in the standard versions with 1, 2 or 3 photocell taps, with lever control, foot control and knee control. Dimensions and accessories can be fully personalized.



SURGICAL SCRUB SINK, WALL HANGING WITH PHOTOCELL CONTROL



Surgical scrub sink in stainless steel **AISI 304 EN 10088 1.4307**.

The standard version is equipped with basin body and rear lifting without welding seams, wall tap/s with timer photocell and mixer tap control.

The basin and the backsplash are realized in a single element, which make the product easy to clean. Furthermore the basin is realized with rounded corners. The depth of the basin is 318 mm.

CODE	L	H	D	PLACES
82010000	900	1160	560	1 P
82010001	1300	1160	560	2 P
82010002	1600	1160	560	2 P
82010003	1600	1160	560	3 P
82010004	1900	1160	560	3 P

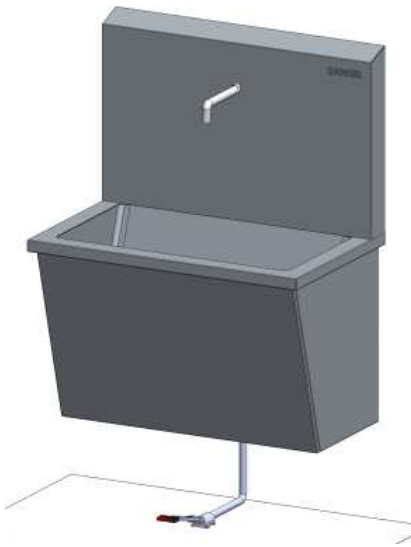
■ **SURGICAL SCRUB SINK, WALL HANGING WITH LEVER CONTROL**

Surgical scrub sink in stainless steel **AISI 304 EN 10088 1.4307**.

The standard version is equipped with basin body and rear lifting without welding seams, wall tap/s with lever mixer control.

The basin and the backsplash are realized in a single element, which make the product easy to clean. Furthermore the basin is realized with rounded corners. The depth of the basin is 318 mm.

CODE	L	H	D	PLACES
82010005	900	1160	560	1 P
82010006	1300	1160	560	2 P
82010007	1600	1160	560	2 P
82010008	1600	1160	560	3 P
82010009	1900	1160	560	3 P

■ **SURGICAL SCRUB SINK, WALL HANGING WITH FOOT CONTROL**

Surgical scrub sink in stainless steel **AISI 304 EN 10088 1.4307**.

The standard version is equipped with basin body and rear lifting without welding seams, wall tap/s with foot mixer control.

The basin and the backsplash are realized in a single element, which make the product easy to clean. Furthermore the basin is realized with rounded corners. The depth of the basin is 318 mm.

CODE	L	H	D	PLACES
82010010	900	1160	560	1 P
82010011	1300	1160	560	2 P
82010012	1600	1160	560	2 P
82010013	1600	1160	560	3 P
82010014	1900	1160	560	3 P

■ *SURGICAL SCRUB SINK, WALL HANGING WITH KNEE CONTROL*



Surgical scrub sink in stainless steel **AISI 304 EN 10088 1.4307**.

The standard version is equipped with basin body and rear lifting without welding seams, wall tap/s with knee control. The basin and the back splash are realized in a single element, which make the product easy to clean. Furthermore the basin is realized with rounded corners. The depth of the basin is 318 mm.

CODE	L	H	D	PLACES
82010016	900	1160	560	1 P
82010017	1300	1160	560	2 P
82010018	1600	1160	560	2 P
82010019	1600	1160	560	3 P
82010020	1900	1160	560	3 P

■ **SINK BENCH WITH 1 SINK AND LEVER CONTROL**

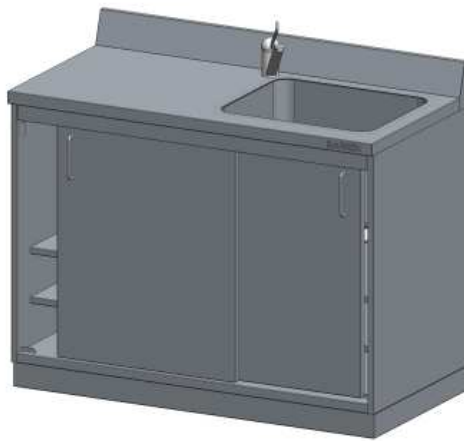
Sink bench in stainless steel **AISI 304 EN 10088 1.4307**.

The standard version is equipped with 1 sink, rear lifting H100 mm and water tap with lever control. The lower part is equipped with 1 leaf blind door and 1 adjustable shelf.

The sink bench is equipped with a stainless steel baseboard H 100 mm.

CODE	L	H	D
82012008	600	870	600

SINK BENCH WITH 1-2 SINKS, DRAINER AND LEVER CONTROL



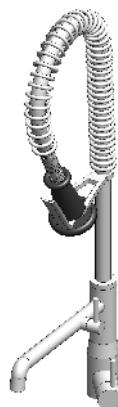
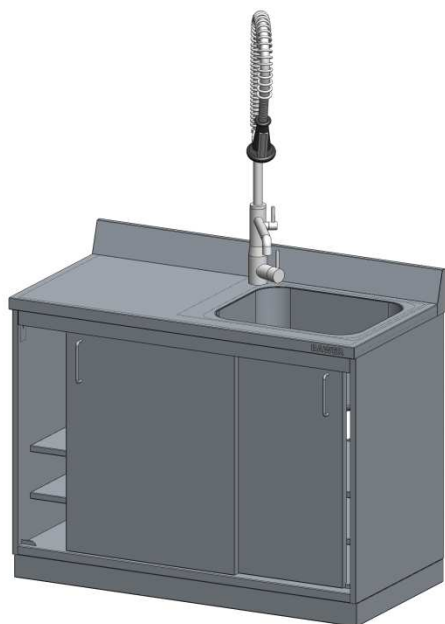
Sink bench in stainless steel **AISI 304 EN 10088 1.4307**.

It is available with 1 or 2 sinks. It is equipped with drainer, water tap with lever control and rear lifting H 100 mm. On the lower part, the sink bench is endowed with 2 sliding blind doors and 2 adjustable shelves.

The sink bench has a stainless steel baseboard H 100 mm.

CODE	L	H	D	SINK
82012000	1200	870	600	1
82012001	1800	870	600	1
82012002	1200	870	600	2
82012003	1800	870	600	2

SINK BENCH WITH 1-2 SINKS, DRAINER AND WATER PIPE



FLEXIBLE SHOWER HOSE

Sink bench in stainless steel **AISI 304 EN 10088 1.4307**.

It is available with 1 sink with drainer or with 2 sinks. It is equipped with drainer, water tap with flexible shower hose and rear lifting H 100 mm. On the lower part, the sink bench is endowed with 2 sliding blind doors and 2 adjustable shelves.

The sink bench has a stainless steel baseboard H 100 mm.

CODE	L	H	D	SINK
82012004	1200	870	600	1
82012005	1800	870	600	1
82012006	1200	870	600	2
82012007	1800	870	600	2

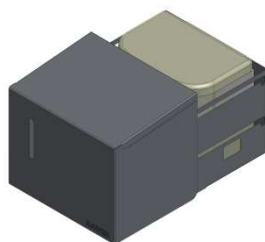
9. ACCESSORIES FOR SCRUB SINK

On request, it is possible to supply the scrub sink with the following accessories:

- **SOAP DISPENSER WITH PHOTOCELL CONTROL**
- **SOAP DISPENSER WITH LEVER CONTROL**
- **NAIL BRUSH DISPENSER**

■ **SOAP DISPENSER WITH PHOTOCELL CONTROL**

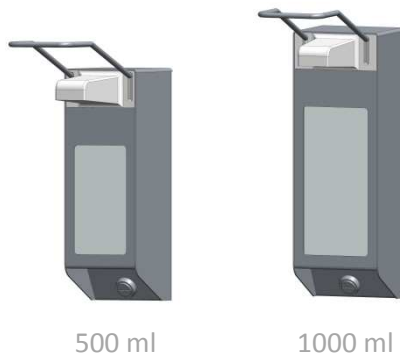
CLOSED



OPEN

Soap dispenser with photocell control realized in stainless steel **AISI 304 EN 10088 1.4307**.

CODE	CAPACITY
82095004	750 ml

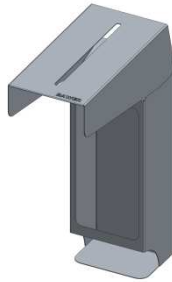
■ **SOAP DISPENSER WITH LEVER CONTROL**

Soap dispenser with lever control realized in stainless steel **AISI 304 EN 10088 1.4307**.

CODE	CAPACITY
820950XX	500 ml
820950XX	1000 ml

■ **NAIL BRUSH DISPENSER**

CLOSED



OPEN

Nail brush dispenser realized in stainless steel **AISI 304 EN 10088 1.4307**.

CODE

82095005

10. MULTIPURPOSE TROLLEYS

BAWER MEDICAL trolleys are designed to be more functional and practical and they have a strong stainless steel AISI 304 frame in order to grant a perfect and deep hygiene.

The product range includes container and sheets-holder trolleys, anesthesia trolley, trolley for dressing, trolley with 1 or 2 handles, sack-holder trolley and bowl stand.

Several optional are available for a complete personalized product.



BAWER s.p.A. - Zona Industriale Jesce - 75100 Matera - Italy - Tel. +39 0835 24 59 11 - Fax +39 0835 24 59 35 - info@bawer.it - www.bawer.it
P.IVA /Cod. Fisc.: IT05593210726

- MULTIPURPOSE TROLLEYS -

Supplied by Merlin Industrial Products Ltd - 0845 124 9955 - sales@merlin-industrial.co.uk

MULTIPURPOSE TROLLEY WITH 1 HANDLE AND 3 REMOVABLE TRAYS



Multipurpose trolley in stainless steel **AISI 304 EN 10088 1.4307**.

The standard version is equipped with 3 embossed, removable trays, 1 push handle and 4 whirling wheels Ø 100 mm, 2 of them with brakes.

CODE	L	H	D
81052000	650	870	400
81052001	700	870	500
81052002	800	870	500
81052003	900	870	500
81052004	1000	870	600
81052005	1200	870	600

MULTIPURPOSE TROLLEY WITH 1 HANDLE AND 3 FIXED TRAYS



Multipurpose trolley in stainless steel **AISI 304 EN 10088 1.4307**.

The standard version is equipped with 3 embossed, fixed trays, 1 push handle and 4 whirling wheels Ø 100 mm, 2 of them with brakes.

CODE	L	H	D
81052006	650	870	400
81052007	700	870	500
81052008	800	870	500
81052009	900	870	500
81052010	1000	870	600
81052011	1200	870	600

MULTIPURPOSE TROLLEY WITH 1 HANDLE



Multipurpose trolley in stainless steel **AISI 304 EN 10088 1.4307**.

The standard version is realized with a tubular structure of 25 mm totally welded, without visible junctions, with 2 embossed shelves, 1 horizontal push handle, 4 antistatic wheels Ø 100 mm, 2 of them with brakes.

CODE	L	H	D
82050000	650	870	400
82050001	700	870	500
82050002	800	870	500
82050003	900	870	500
82050004	1000	870	600
82050005	1200	870	600

MULTIPURPOSE TROLLEY WITH 2 HANDLES



Multipurpose trolley in stainless steel **AISI 304 EN 10088 1.4307**.

The standard version is realized with a tubular structure of 25 mm, totally welded, without visible junctions, with 2 embossed shelves, 2 vertical push handles, 4 antistatic wheels Ø 100 mm, 2 of them with brakes.

CODE	L	H	D
82051000	650	870	400
82051001	700	870	500
82051002	800	870	500
82051003	900	870	500
82051004	1000	870	600
82051005	1200	870	600

■ **MULTIPURPOSE TROLLEY WITH RAILING**

Multipurpose trolley in stainless steel **AISI 304 EN 10088 1.4307**.

The standard version is realized with a tubular structure of 25 mm, totally welded, without visible junctions, with 2 embossed shelves, 2 vertical push handles, external railing on the 4 side panels and 4 antistatic wheels Ø 100 mm, 2 of them with brakes.

CODE	L	H	D
82051006	650	870	400
82051007	700	870	500
82051008	800	870	500
82051009	900	870	500
82051010	1000	870	600
82051011	1200	870	600

MULTIPURPOSE TROLLEY WITH DRAWER



Multipurpose trolley in stainless steel **AISI 304 EN 10088 1.4307**.

The standard version is realized with a tubular structure of 25 mm, with 2 embossed shelves, 2 vertical push handles, 1 drawer placed under the work top and 4 antistatic wheels Ø 100 mm, 2 of them with brakes.

CODE	L	H	D
82051012	650	870	400
82051013	700	870	500
82051014	800	870	500
82051015	900	870	500
82051016	1000	870	600
82051017	1200	870	600

■ **ANESTHESIA TROLLEY WITH 3 DRAWERS**

Anesthesia trolley in stainless steel **AISI 304 EN 10088 1.4307**.

The standard version is equipped with rear lifting on the 3 side panels, 3 pull-out drawers, 1 big and 2 small placed under the work top, 2 push handles and 4 antistatic wheels Ø 100 mm, 2 of them with brakes.

CODE	L	H	D
82056000	820	900	640

■ ANESTHESIA TROLLEY WITH 1 DRAWER AND 2 LEAF BLIND DOORS



Anesthesia trolley in stainless steel **AISI 304 EN 10088 1.4307**.

The standard version is equipped with rear lifting on the 3 side panels, 1 pull-out drawer placed under the work top, 2 leaf blind doors on the lower part, 2 horizontal push handles and 4 antistatic wheels Ø 100 mm, 2 of them with brakes.

CODE	L	H	D
82056001	820	900	640

■ ANESTHESIA TROLLEY WITH 2 DRAWERS AND 2 LEAF BLIND DOORS



Anesthesia trolley in stainless steel **AISI 304 EN 10088 1.4307**.

The standard version is equipped with rear lifting on the 3 side panels, 2 small pull-out drawers placed under the work top, 2 leaf blind doors on the lower part, 2 horizontal push handles and 4 antistatic wheels Ø 100 mm, 2 of them with brakes.

CODE	L	H	D
82056002	820	900	640

■ ANESTHESIA TROLLEY WITH DRIP STAND



Anesthesia trolley in stainless steel **AISI 304 EN 10088 1.4307**.

The standard version is equipped with 2 small drawers under the work top, 2 big drawers on the lower part, distance between the upper drawers and the lower one is 260 mm, 1 drip stand and 4 antistatic wheels Ø 100 mm, 2 of them with brakes.

CODE	L	H	D
82056003	470	870/1700	570

■ TROLLEY FOR DRESSING



Trolley for dressing in stainless steel **AISI 304 EN 10088 1.4307**.

The standard version is equipped on the upper part with a module endowed with 15 plastic drawers with LIFO storing system and on the lower part it is equipped with 1 pull-out drawer and 2 leaf blind doors, rear lifting on the 3 side panels and 2 horizontal push handles. With 4 antistatic wheels Ø 100 mm, 2 of them with brakes.

CODE	L	H	D
82057000	820	870/1600	640

■ **CONTAINER-HOLDER TROLLEY FOR 6 OR 9 CONTAINERS**

Trolley in stainless steel **AISI 304 EN 10088 1.4307**.

The standard version is equipped with 2 leaf blind doors, 2 vertical push handles, lock system. It is designed to hold 6 or 9 containers 600x300x300 mm. With 4 antistatic wheels Ø 100 mm, 2 of them with brakes.

CODE	L	H	D	NO. OF CONTAINERS
82055000	1080	1100	700	6
82055001	1080	1400	700	9

■ **CLEAN-DIRTY LINEN CLOSED TROLLEY WITH 1 SACK**



Clean-dirty linen closed trolley in stainless steel **AISI 304 EN 10088 1.4307**.

The standard version is equipped with 2 leaf blind doors, lock system and 1 push handle, 1 sack-holder ring placed on the side panel, 4 antistatic wheels Ø 100 mm, 2 of them with brakes.

CODE	L	H	D
82061000	800/1220	1300	690

■ **CLEAN-DIRTY LINEN CLOSED TROLLEY WITH 2 SACKS**

Clean-dirty linen closed trolley in stainless steel **AISI 304 EN 10088 1.4307**.

The standard version is equipped with 2 leaf blind doors, lock system, 1 push handle, 2 sack-holder rings placed on the side panels and 4 antistatic wheels Ø 100 mm, 2 of them with brakes.

CODE	L	H	D
82061001	800/1220	1300	690

■ **CLEAN-DIRTY LINEN TROLLEY**

Clean-dirty linen trolley in stainless steel **AISI 304 EN 10088 1.4307**.

The standard version is equipped with 2 embossed trays, 1 sack-holder ring, 2 push handles and 4 antistatic wheels Ø 100 mm, 2 of them with brakes.

CODE	L	H	D
82062000	1100	870	600

■ **CLEAN-DIRTY LINEN CLOSED TROLLEY**

Clean-dirty linen closed trolley in stainless steel **AISI 304 EN 10088 1.4307**.

The standard version is equipped with 1 closed compartment with leaf blind door and lock system, 1 sack-holder ring, 2 push handles and 4 antistatic wheels Ø 100 mm, 2 of them with brakes.

CODE	L	H	D
82062001	1100	870	600

■ **BOWL STAND**

Bowl stand in stainless steel **AISI 304 EN 10088 1.4307**.

It is available with 1 or 2 bowls. Deep-drawn stainless steel bowl, capacity 6 l. With 4 antistatic wheels, 2 of them with brakes.

CODE	L	H	D	PLACES
82058000	500	870	500	1
82059000	680	870	500	2

■ **DRIP STAND**

Drip stand in stainless steel **AISI 304 EN 10088 1.4307**.

The drip stand is available with fixed or with adjustable height through oleodinamic pump with foot control, 4 hooks , maximum load 20 Kg fairly distributed. Base anti-tilting with 5 antistatic wheels, 2 of them with brakes.

CODE	H
82063000	1970
82063001	1650/2650
82063002	1800/1970

■ **SACK-HOLDER TROLLEY**

Sack-holder trolley in stainless steel **AISI 304 EN 10088 1.4307**.

It is realized with tubular structure \varnothing 20 mm without visible welding seams, with sack holder ring \varnothing 500 mm, hooks to hold the sack and whirling wheels.

CODE	\varnothing	H
82025000	500	870

11. MAYO TABLES

BAWER Medical trolleys are planned for the carriage of medicines, instruments and what is necessary in the hospital wards and sterile environments; the trolleys stand out because of the high care in the technical details.

The Mayo table is produced in satin stainless steel AISI 304 standard finishing.

The work surface is extractable and therefore easily sterilizable. It is available also in a new version with swivel tray system to be fixed in any position.

The height adjustment occurs through hydraulic pump.

Endowed with anti-static brake castors. On demand it's possible to personalize them with protective buffers or to get any kind of finishing.



■ **MAYO TABLE WITH PULL-OUT TRAY**

Mayo table in stainless steel **AISI 304 EN 10088 1.4307**.

The standard version is made up of embossed and pull-out tray, the height adjustment occurs through foot hydraulic pump. With 4 antistatic castors, 2 of them with brakes.

CODE	L	H	D
82015000	600	925/1300	400
82015001	700	925/1300	500
82015002	800	925/1300	600
82015003	1000	925/1300	600
82015004	1250	925/1300	650

MAYO TABLE WITH PULL OUT AND SWIVEL TRAY



DETAIL PULL OUT AND
SWIVEL TRAY

Mayo table in stainless steel **AISI 304 EN 10088 1.4307**.

The standard version is made up of embossed, pull-out and swivel tray which can be fixed in any position, the height adjustment occurs through foot hydraulic pump. With 4 antistatic castors, 2 of them with brakes.

CODE	L	H	D
82016000	600	925/1300	400
82016001	700	925/1300	500

■ **TABLE FOR OPERATING ROOM**

Table for operating room in stainless steel **AISI 304 EN 10088 1.4301**.

The work top is equipped with a rear lifting H150mm in tubular Ø 27mm in stainless steel AISI 304 EN 10088 1.4307.

The work top is supported by a marine plywood. The structure has 4 antistatic wheels, 2 of them with brakes.

All the edges are rounded, as per the current regulations, to avoid damages to the end user.

CODE	L	H	D
82017000	1400	870	600
82017001	1600	870	600

12. STEPS

BAWER MEDICAL steps are designed and produced by complying fully with the healthcare standards and are available in the single or double version. Great attention is also turned to the functionality as guarantee of long duration.

The non-slip support surface of the step can be easily cleaned and it is comfortable to the touch.



■ **SINGLE STEP**

Single step in stainless steel **AISI 304 EN 10088 1.4307**.

It is realized with a welded tubular structure, with embossed nonslip surface and antistatic feet.

CODE	L	H	D
82020000	600	130	350
82020001	600	220	350
82020002	600	300	350

■ **DOUBLE STEP**

Double step in stainless steel **AISI 304 EN 10088 1.4307**.

It is realized with a welded tubular structure, with embossed nonslip surface and antistatic feet.

CODE	L	H	D
82021000	600	220/440	650

13 SHELVES

BAWER Medical's wall shelving and shelves distribution and collection systems are functional and effective. They grant the maximum order and a high resistance to cleaner and disinfectants used in the healthcare field.

The **BAWER Medical** wall shelving has been studied to offer the maximum functionality and it stands out for the high affectation of technical details. It is endowed with a quick hook-up system for the shelves, according to the use.

The **BAWER Medical** shelving can be fully personalized in the finishing and dimensions according to customer's use requirements.

MODULAR SHELVING



Modular wall shelving in stainless steel **AISI 304 EN 10088 1.4307**.

The standard version is made up of 6 adjustable shelves, quick hook-up system for the shelves. Maximum load of 20kg/shelf.

CODE	L	H	D
82066000	1000	2000	500
82066001	1200	2000	500
82066002	1400	2000	500

■ **WALL SHELVING**

Wall shelving in stainless steel **AISI 304 EN 10088 1.4307**.

The standard version is made up of 6 adjustable shelves, with quick hook-up system for the shelves.

CODE	L	H	D
82067000	1000	2000	350
82067001	1200	2000	350
82067002	1400	2000	350

■ **WALL SHELVES**

Wall shelves in stainless steel **AISI 304 EN 10088 1.4307**.

The standard version is made up of 3 adjustable shelves, with quick hook-up system for the shelves.

CODE	L	H	D
82068000	1000	900	350
82068001	1200	900	350
82068002	1400	900	350